

# ***SELECT 4221 Takes Production to the Max.***



- Outstanding performance and output
- Large volume production
- Heavy duty top quality construction
- Fully hydraulic system
- Computerized networks with valuable time-saving features



**Large Volume Production for Maximum Profits**

# SELECT 4221 AT A GLANCE

Designed for commercial use, Select Model 4221 is reputable for its exceptional quality workmanship and performance. This, combined with the mill's capability for large volume production is what defines Model 4221 as the ultimate band sawmill.

High volume production is achieved with this bandmill's astonishing cutting speed of up to 3 feet per second and the double-cut blade which cuts in both directions.

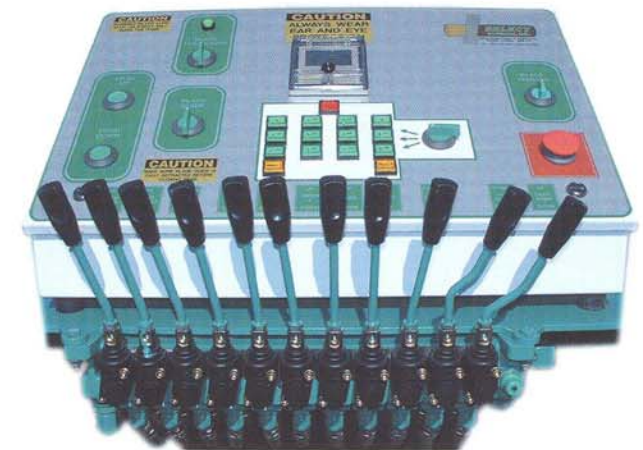
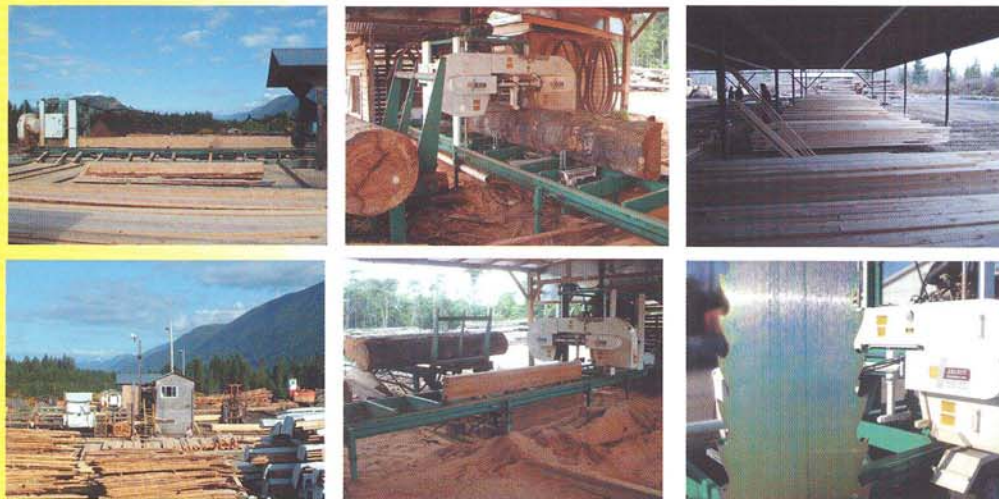
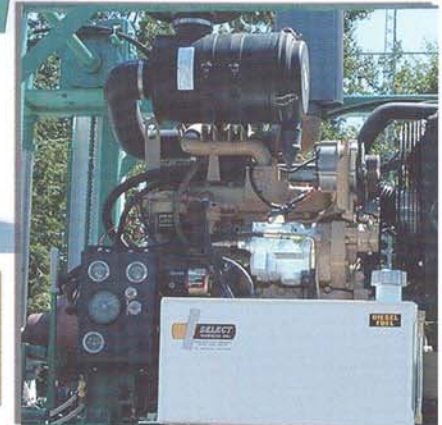
The computerized networks has 12 preset thicknesses to choose from and an additional two memories for hold and recall specially designed for cutting hard wood. In addition there is a digital display to see the blade height at all times.

Less sawdust and more lumber is produced with a kerf of only 3/32". The hydraulic system permits you to turn, level, and dog the log, as well as adjust the blade guide and blade tension.

Also very popular are the optional hydraulic rollers on tapers to forward and reverse the log.



Powered by a 115 hp John Deere turbo diesel engine or a 75 hp electric, this mill will cut effortlessly into any type of wood.



Example of the hold and recall feature: Once sawing is completed on two sides of a log, before turning it, press Memory 1. You can then turn the log and cut a couple of planks as wanted, and before turning it, press Memory 2. Now turn the log, press Memory 1, and the blade will return to the position as programmed in Memory 1.

**Cutting Speed Up to 3 Feet per Second!!!**

# SELECT 4221 SPECS AND OPTIONS

Stationary and portable units available

## Standard Unit Includes:

- 36" band saw wheels with double tapered bearings
- Computerized setworks with 12 preset thicknesses and two memory hold and recall
- Hydraulics: log turner, two back posts, two dogs, two tapers, blade tensioner, blade guide, head lift, carriage feed
- 3'10" wide frame x 30' long

## Options:

- Trailer package including double axle (6,500 lbs each) with brakes on both axles, 2 5/16" coupler and light package
- Hydraulic log loader
- Hydraulic rollers on tapers to forward or reverse log at will
- Hydraulic oil tank heaters
- John Deere block heater
- Extra frame length
- Setwork programmer
- Live deck (two chains - 24' deck)
- Offloading decks / conveyors

## Specifications:

Frame length -----	30'
Total length -----	34' (38' with tongue)
Width (head closed) -----	8'5"
Width (head open) -----	9'3"
Height -----	10'
Weight (depends on options) ---	Approx. 10,000 lbs
Space in between guides -----	34"
Throat -----	14"
Bandsaw wheels -----	36"
Ball required for coupler -----	2 5/16"
Maximum log size -----	42" in dia. x 22' long
Live deck -----	7' wide x 24' long

## Complete Hydraulic System



## Full range of decks and conveyors



This mill has a cutting depth of 14" and can cut a log 42" in dia. x 22' long, down to 1" from the bed.

# SELECT 4221 HIGHLIGHTS

Exceptional quality workmanship on the Model 4221 is due to strict quality control with an emphasis on precision and accuracy. The result is a STRONG and SOLID mill and is what distinguishes SELECT mills from all other mills on the market.

FRAME	Made exclusively of 2" x 8" x 1/4" thick tubing and supported by 10 legs which are fully adjustable.
HEAD LIFT SYSTEM	Double chain lift system with four 1-3/4" hard chrome shafts for head lift guides with 6 inches of brass in each corner and grease fittings.
CARRIAGE DRIVE	Hydraulic motor with no. 80 chain. Speed is from 0 to 3 ft. per second.
CARRIAGE WHEELS	6" carriage wheels with double-tapered bearings and grease fittings on a unique track design.
CARRIAGE CONTROL LINES	Hydraulic hoses and electric cable all supported by unique cable design and covered by a weatherproof nylon sock.
BANDSAW WHEELS	36" bandsaw wheels with double-tapered bearings means that the bearings will take load both ways and carry the weight of the wheels easily. Installed on a 2-11/16" shaft in taper lock hubs.
SAWDUST EVACUATION	Highly efficient sawdust control, achieved with thick plastic strips and good blade scrapers, prevents sawdust deposit on blade wheels inside guards. This system is 94% more efficient than similar designs seen on the market.
BLADE LUBRICATION	Totally automated blade lubricant distribution. By the flick of a switch the system will lubricate both sides of the blade inside heavy thick felt.
HYDRAULIC SYSTEM	A very important and distinct feature is the 10 GPM piston pump with variable displacement which enables the system's hydraulic oil to run cool at all times. It has a closed center system and is without back pressure. Also has 12" clean out with gauge and two filters on hydraulic tank.
ADDED FEATURES	Added features for the operator's comfort such as coffee cup holder, clip board, foot rest and a comfortable fully adjustable seat.



SELECT Sawmill Co., 5889 County Road 17, P.O. Box 81, Plantagenet, ON CANADA K0B 1L0

Specifications herein are subject to change.

**Tel: 1-613-673-1267 - Fax: 1-613-673-2854 - [www.selectsawmill.com](http://www.selectsawmill.com)**